

exbio

A Brighter Future in Flow

COVID-19 Cellular Immunoresponse Monitoring Kits

EXBIO Praha., a.s. is the leading manufacturer of monoclonal antibodies and reagents for research and clinical applications with the focus on multi-color flow cytometry analysis of human cellular markers.

Our vision:
A Brighter Future in Flow

Our goal was to provide all laboratories that analyze peripheral blood samples of COVID-19 patients with an **efficient, reliable and fast tool for analyzing carefully selected cellular subpopulations** that are important for **characterizing the patient's immune system status, monitoring it over time, monitoring the impact of medical intervention** and providing information helpful in **determination of patient's prognosis.**

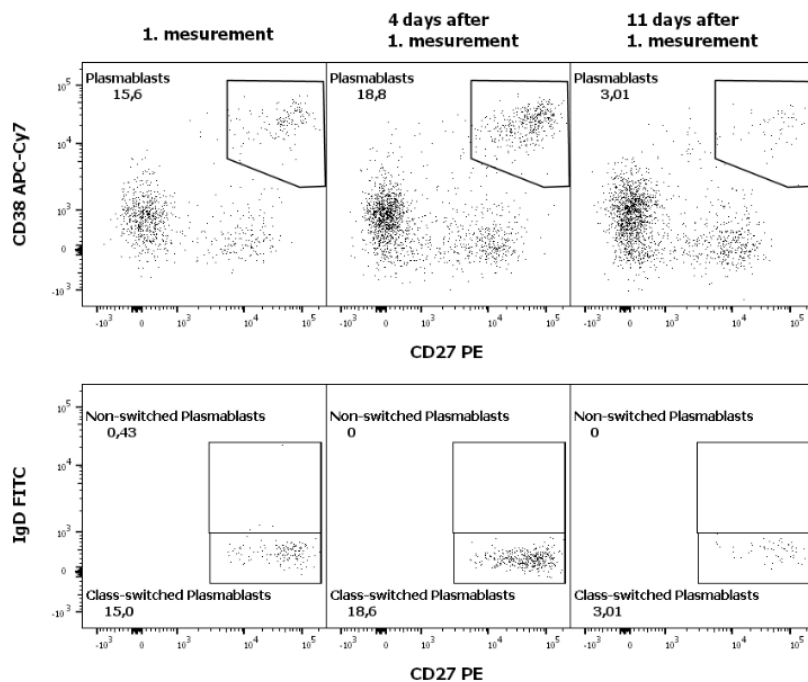
ED7704 DryFlowEx ASC Screen Kit

DryFlowEx ASC Screen Kit is designed for Flow Cytometry screening of Antibody Secreting B Cells (ASC) during viral infection. Multicolor panel of antibody conjugates CD45 Pacific Blue™/ IgD FITC / CD27 PE / CD24 PerCP-Cy™5.5/ CD19 PE-Cy™7 / CD21 APC / CD38 APC-Cy™7 dried in a single flow cytometry tube enables immunophenotyping of differentiated B lymphocyte subsets in EDTA-anticoagulated human blood.

Table 1 – Target population(s) percentage range acquired from normal healthy human whole blood specimens

		95% Range	
n=15	Avg	Min. (Avg - 2 SD)	Max. (Avg + 2 SD)
Class-switched Plasmablasts	1,18%	0,00%	2,50%
Non-switched Plasmablasts	0,03%	0,00%	0,08%

Fig.1 Target population(s) percentage change in time acquired from whole blood specimen of hospitalized patients diagnosed with COVID-19



Distributed by:

ImTec
DIAGNOSTICS NV
Contact: info@imtec.be | +32(0)3-2251139

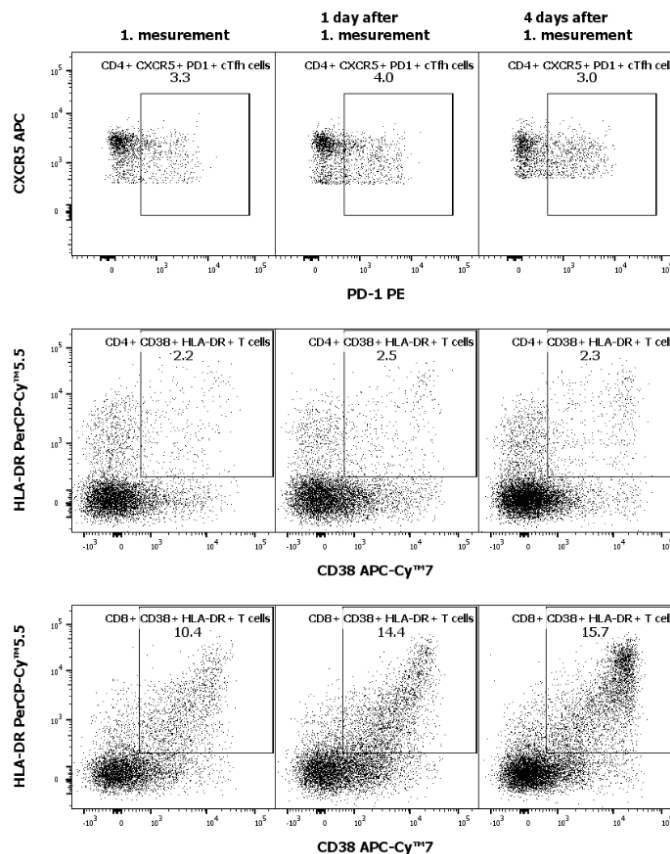
ED7705 DryFlowEx ACT T Screen Kit

DryFlowEx ACT T ScreenKit is designed for Flow Cytometry screening of activated T cells (ACTT) during virus infection. Multicolor panel of antibody conjugates CD45 Pacific Blue™/ CD8 Pacific Orange™/ CD4 FITC / PD-1 PE/ HLA-DR PerCP-Cy™5.5/ CD3 PE-Cy™7/ CXCR5 APC / CD38 APC-Cy™7 dried in a single flow cytometry tube enables immunophenotyping of activated T lymphocyte subsets including a specific population of circulating follicular T helper cells (cTfh) in EDTA-anticoagulated human blood.

Table 2 – Target population(s) percentage range acquired from normal healthy human whole blood specimens

		95% Range	
n=15	Avg	Min. (Avg - 2 SD)	Max. (Avg + 2 SD)
Circulating Follicular Helper T-cells	2,24%	0,90%	3,59%
Activated CD3⁺ CD4⁺ T-cells	0,66%	0,29%	1,03%
Activated CD3⁺ CD8⁺ T-cells	0,67%	0,00%	1,60%

Fig.2 Target population(s) percentage change in time acquired from whole blood specimen of hospitalized patients diagnosed with COVID-19



Recommended Lysing solution
EXCELLYSE Easy ED7066

The product is intended For Research Use Only. Diagnostic or therapeutic applications are strictly forbidden. Products shall not be used for resale or transfer to third parties either as a stand-alone product or as a manufacture component of another product without written consent of EXBIO Praha, a.s. EXBIO Praha, a.s. will not be held responsible for patent infringement or any other violations of intellectual property rights that may occur with the use of the products. Orders for all products are accepted subject to the Term and Conditions available at www.exbio.cz. EXBIO, EXBIO Logo, and all other trademarks are property of EXBIO Praha, a.s.

Alexa Fluor®, Pacific Blue™ and Pacific Orange™ are registered trademarks of Life Technologies Corporation.

This product is provided under an intellectual property license from Life Technologies Corporation. The transfer of this product is conditioned on the buyer using the purchased product solely in research conducted by the buyer, excluding contract research or any fee for service research, and the buyer must not (1) use this product or its components for (a) diagnostic, therapeutic or prophylactic purposes; (b) testing, analysis or screening services, or information in return for compensation on a per-test basis; or (c) manufacturing or quality assurance or quality control, and/or (2) sell or transfer this product or its components for resale, whether or not resold for use in research. For information on purchasing a license to this product for purposes other than as described above, contact Life Technologies Corporation, 5781 Van Allen Way, Carlsbad, CA 92008 USA or outlicensing@lifetech.com.